

LEGO LENS

Wireframes

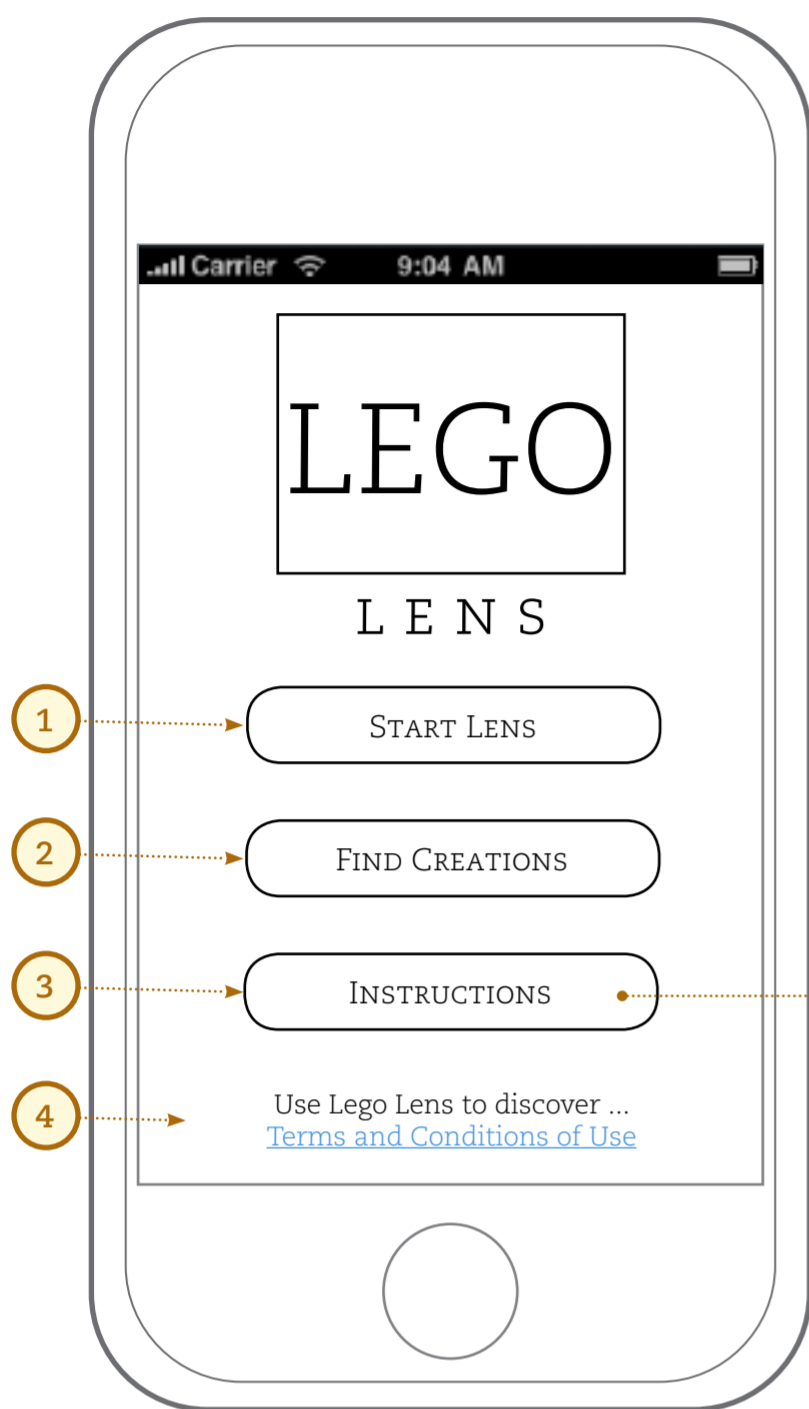
December 14, 2011 11:44 PM

Table of Contents

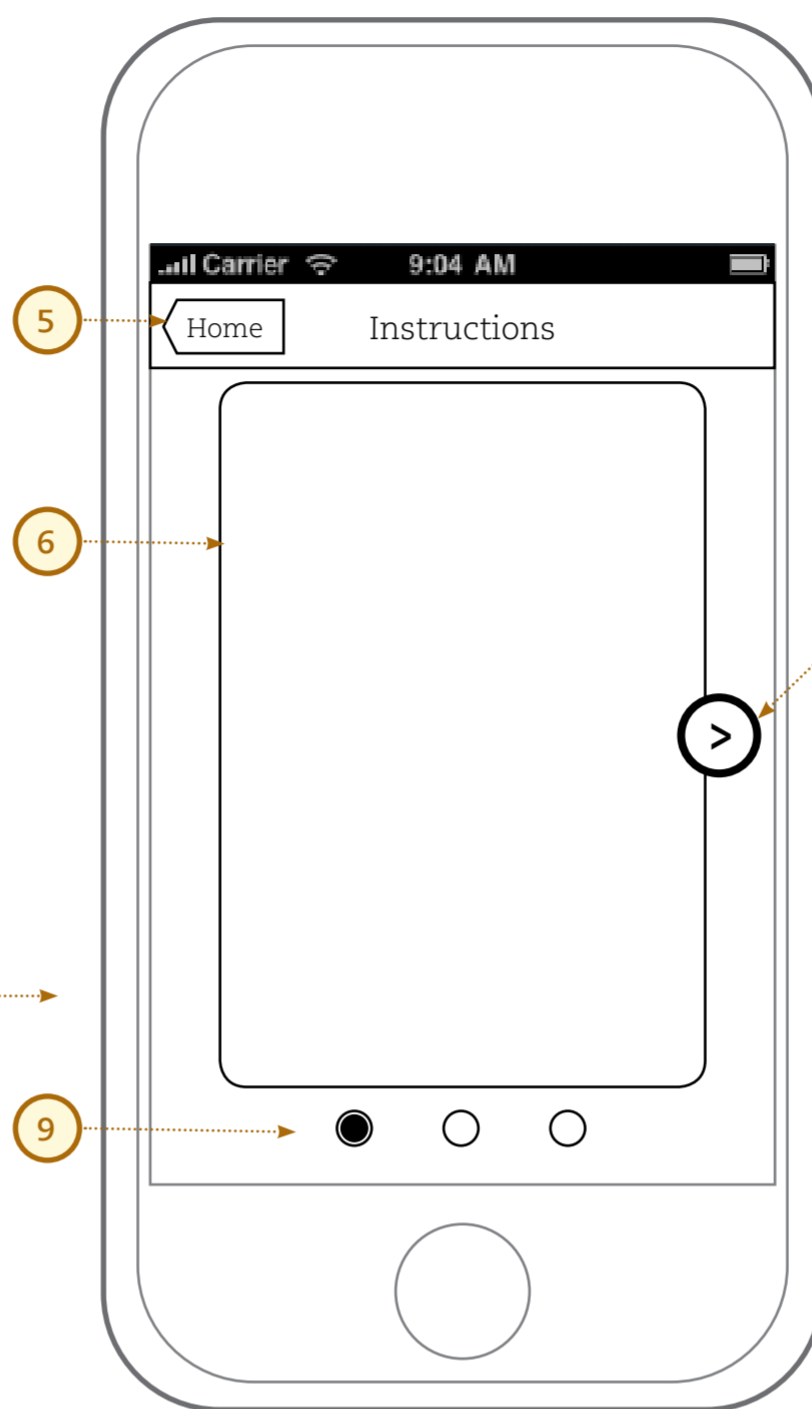
Home View; Instructions View	2
Map View; Location Info	3
Lens View (Mid Range); Creation Loading Indicator; Radar Overlay	4
Lens View (Close Range); Photo Review; Product Info	5
Appendix: Lens View Ranges; Lens View (Far Range)	6
Appendix: Error Handling	7
Appendix: Application Flow	8

HOME VIEW; INSTRUCTIONS VIEW

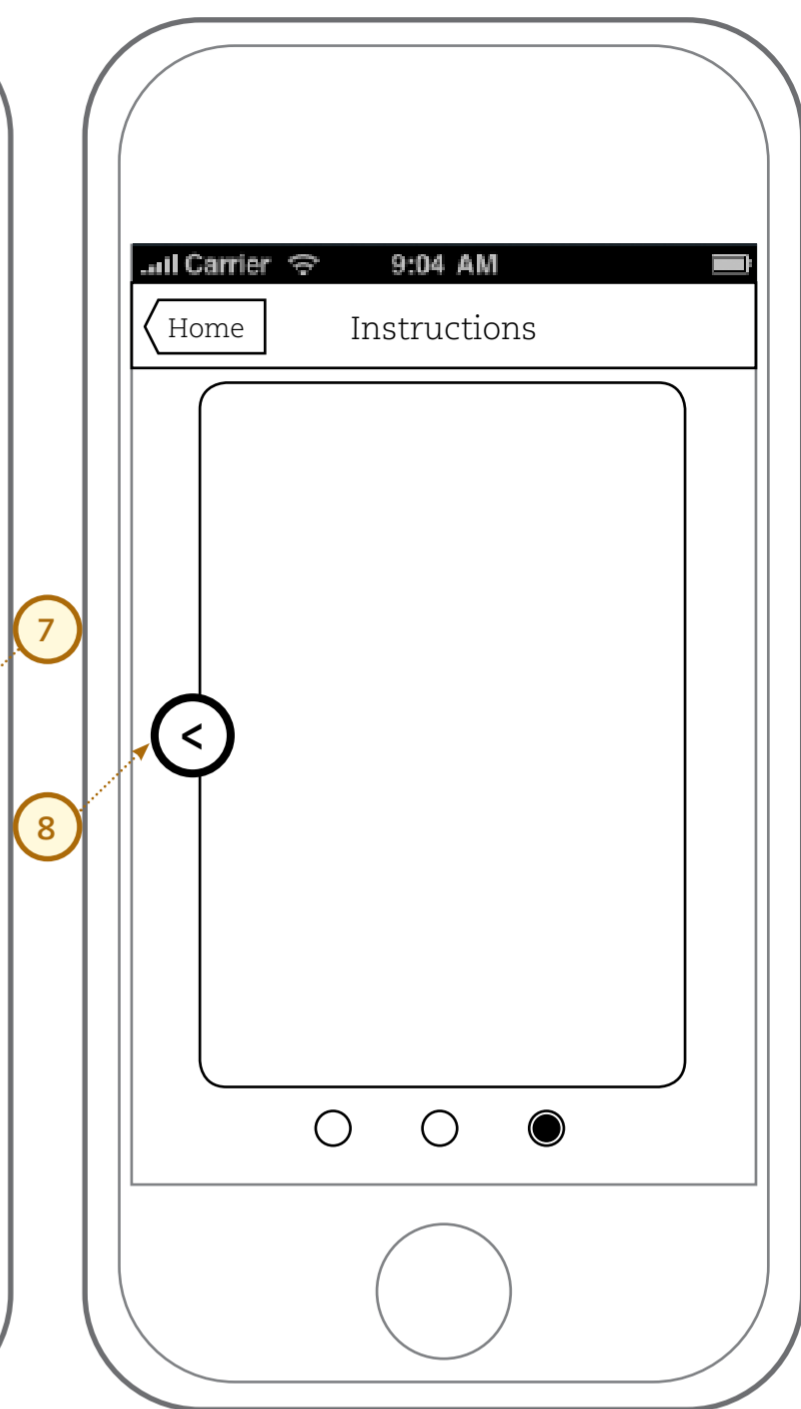
Home View



Instructions View (a.)



Instructions View (b.)

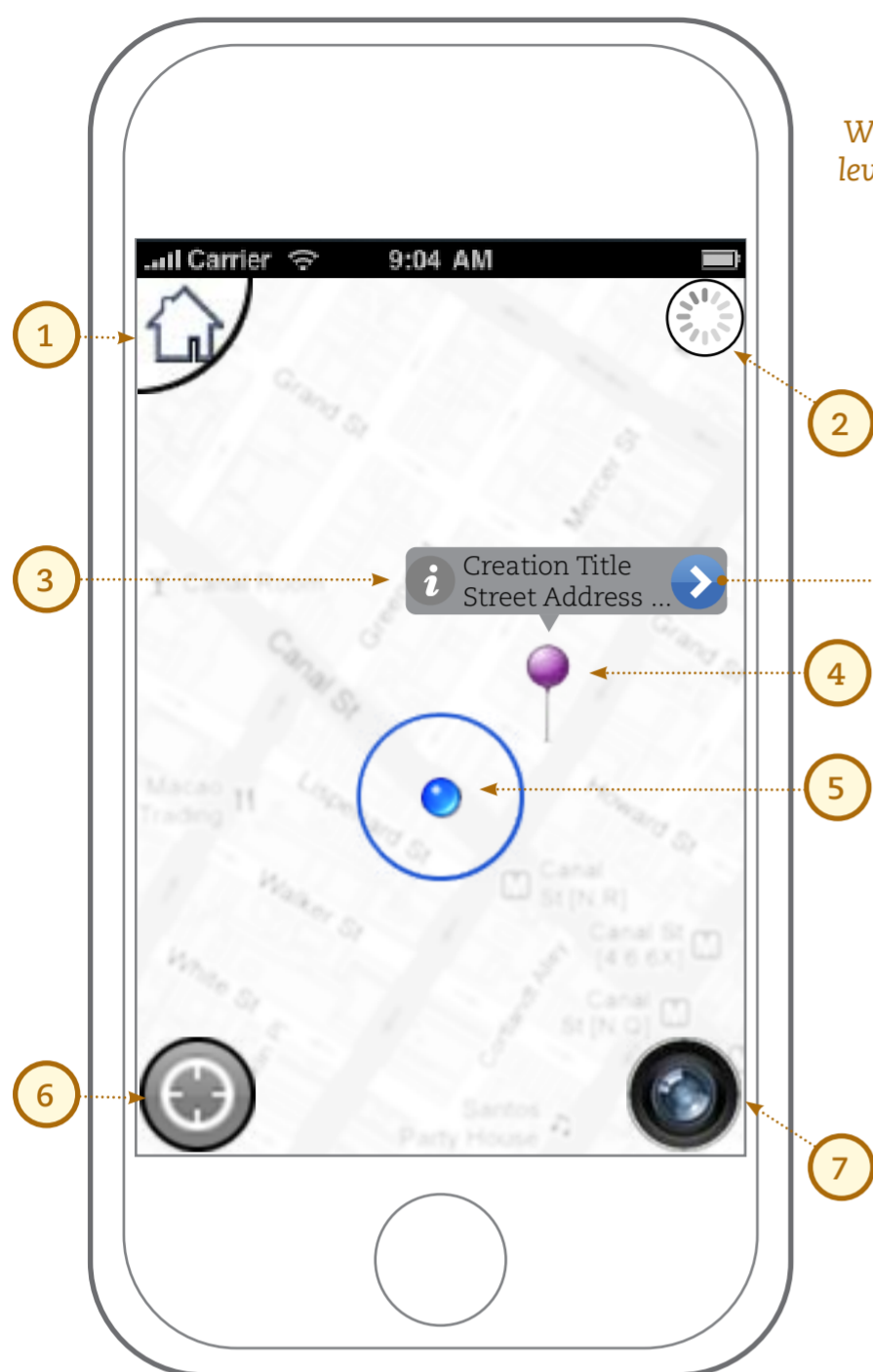


1. Tap for Lens View ... (page 4)
2. Tap for Map View ... (page 3)
3. Tap for Instructions View ... (page 2)
4. Tagline / Link to Disclaimers

5. Navigation Bar
6. Instructions content
7. "Page forward" button
8. "Page back" button
9. Page indicators

MAP VIEW; LOCATION INFO

Map View



When the Map View is loaded, the level of zoom automatically fits the user and the nearest Creation

Location Info

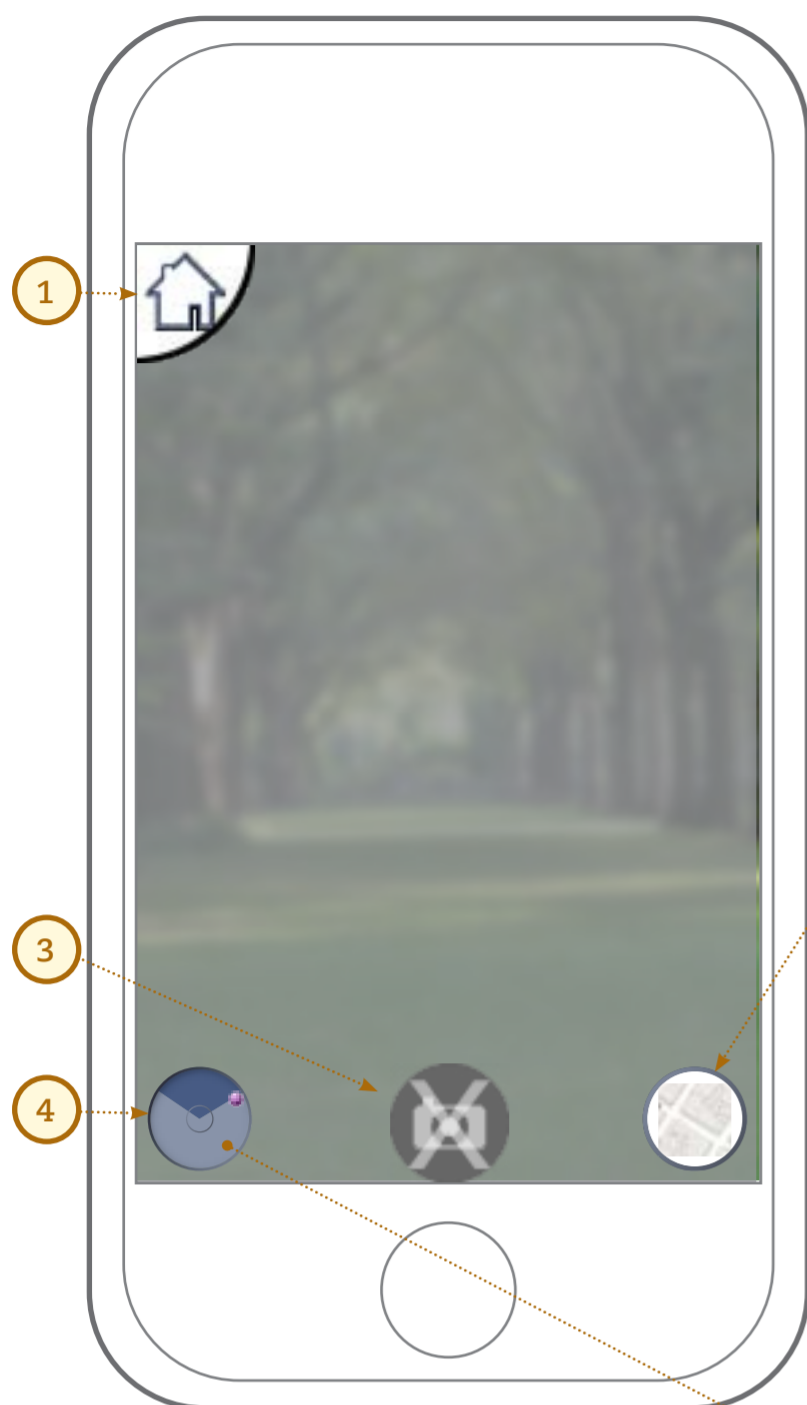


1. Tap for Home View
2. Indication of loading
(loading will be necessary when map is moved)
3. Tap for Location Info
4. Indication of Creations' locations
(custom pins indicate that Creation is New)
5. Indication of your location
6. Tap to refresh your location
7. Tap for Lens View

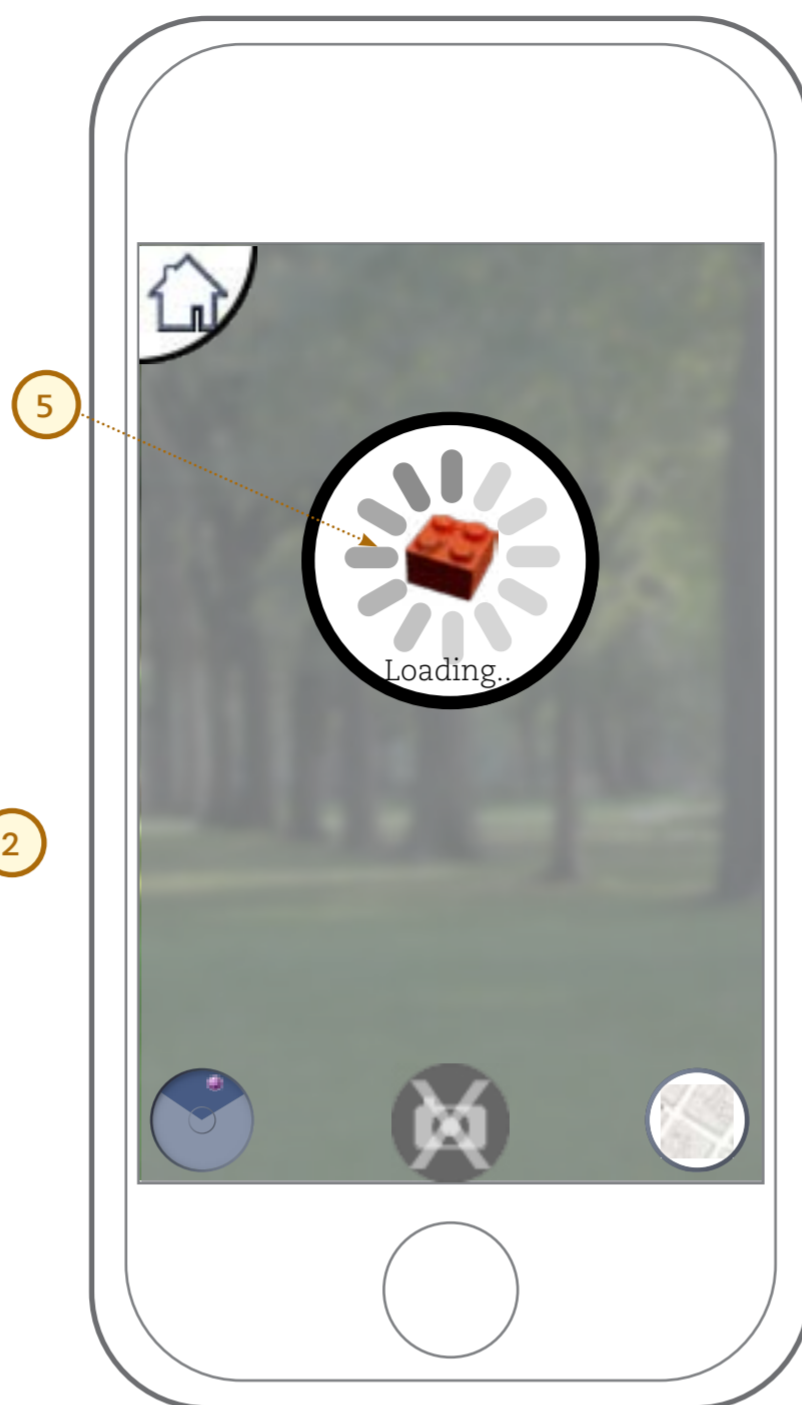
7. (Navigation Bar)
8. Tap for Product Info
9. Creation Thumbnail
10. Creation Title
11. Creation Description
12. Creation Address
13. Tap for travel directions to this location
(handled by default maps app)

LENS VIEW (MID RANGE); CREATION LOADING INDICATOR; RADAR OVERLAY

Lens View (Mid Range)



(w/ Creation Loading Indicator)

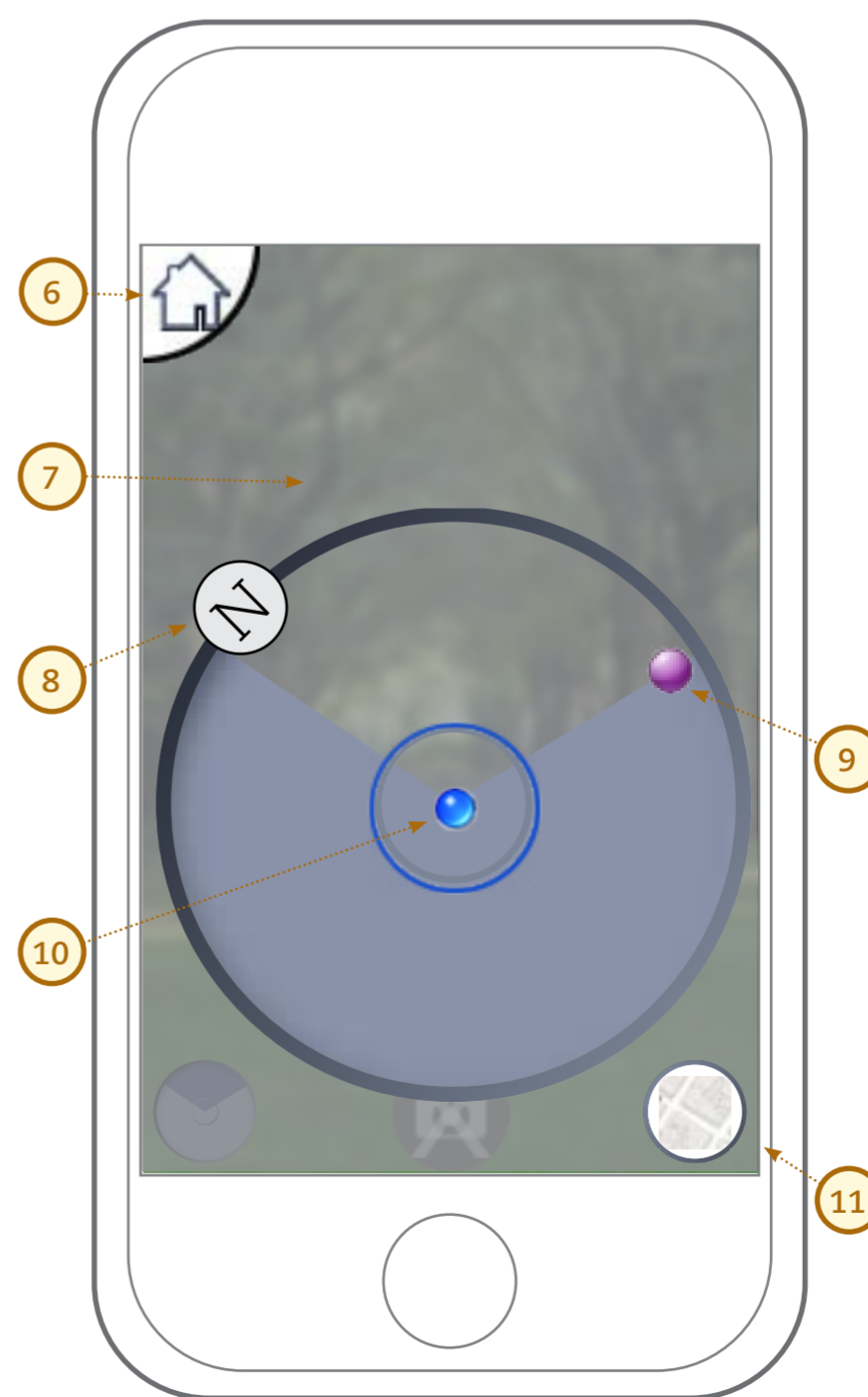


Lens View (Close Range)



1. Tap for Home View
2. Tap for Map View
3. Photo Button is disabled
4. Tap to expand the Radar Overlay
-
5. Creation Loading Indicator
-
6. Tap for Home View
7. Tap anywhere to close Radar Overlay
8. Indication of North (compass functionality)
9. Indication of Creation's Position
10. Indication of User's Position
11. Tap for Map View

(w/ Radar Overlay)



LENS VIEW (CLOSE RANGE); PHOTO REVIEW; PRODUCT INFO

Lens View (Close Range)

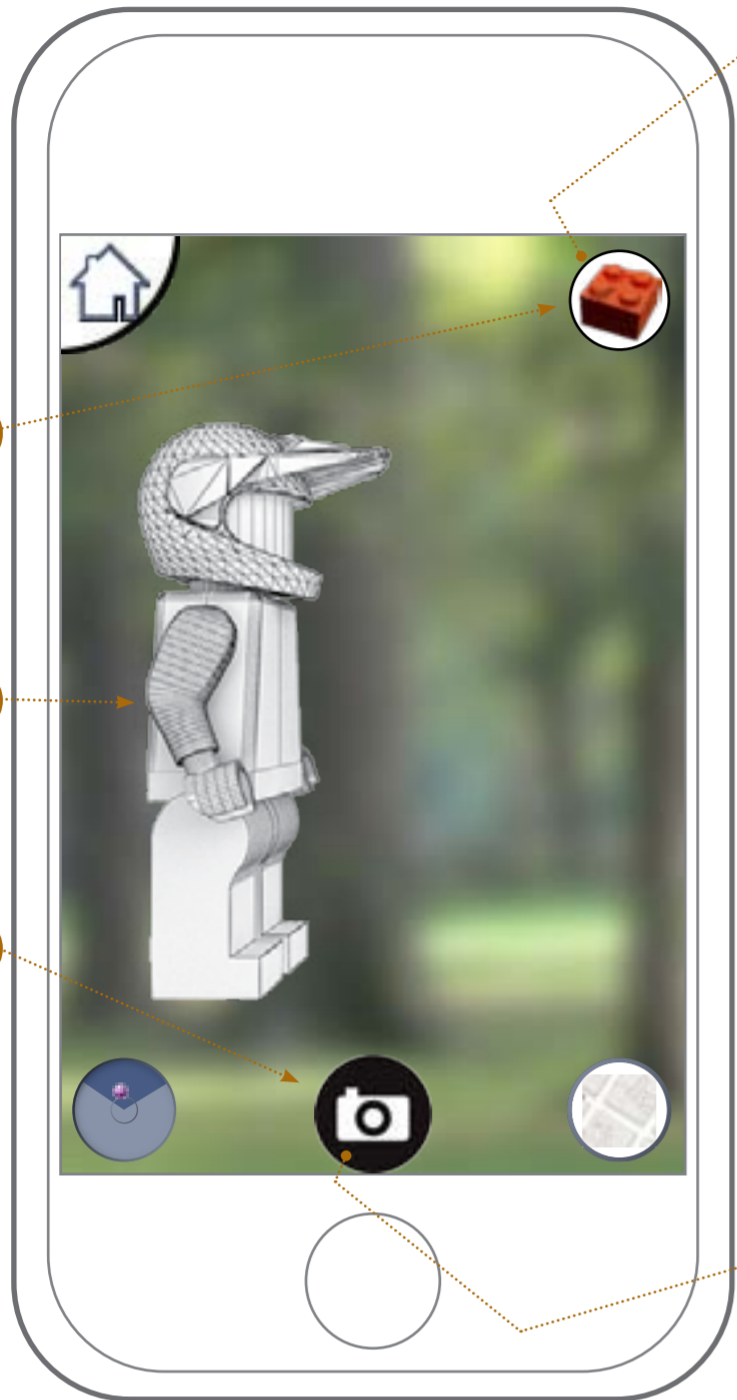
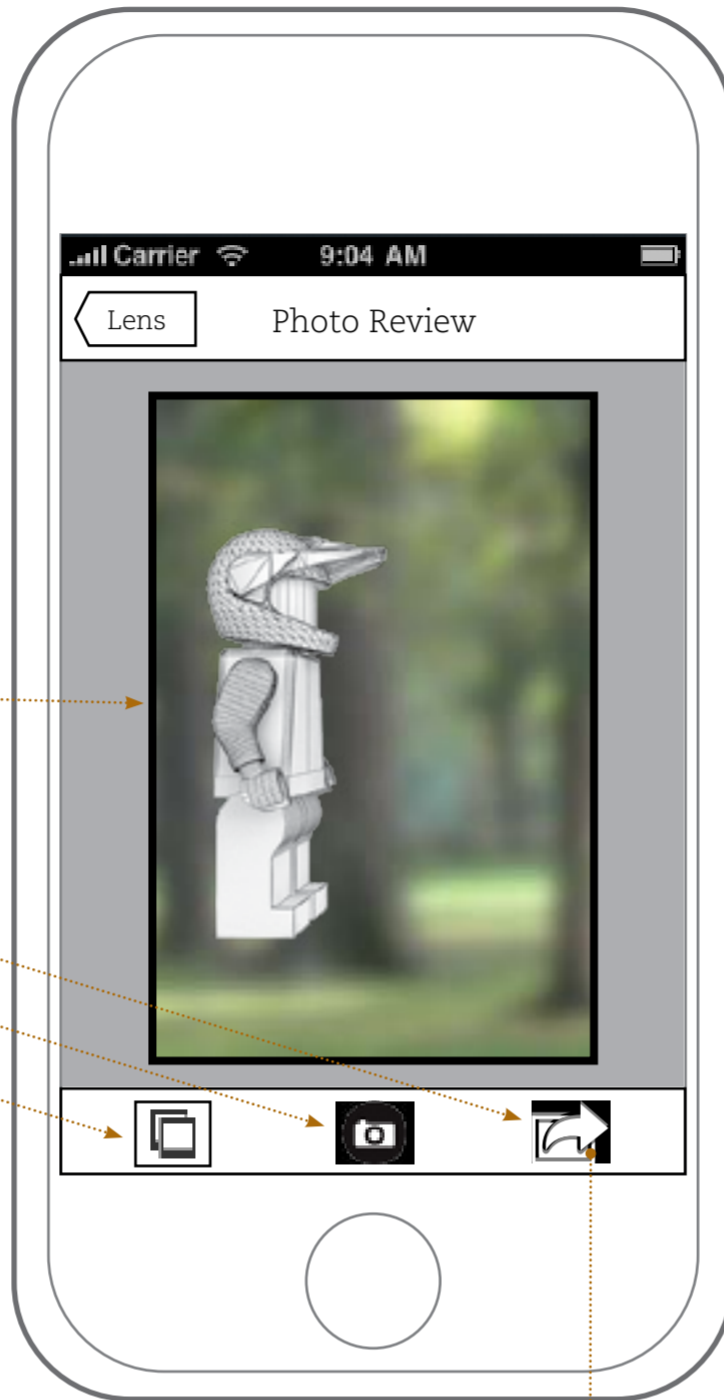
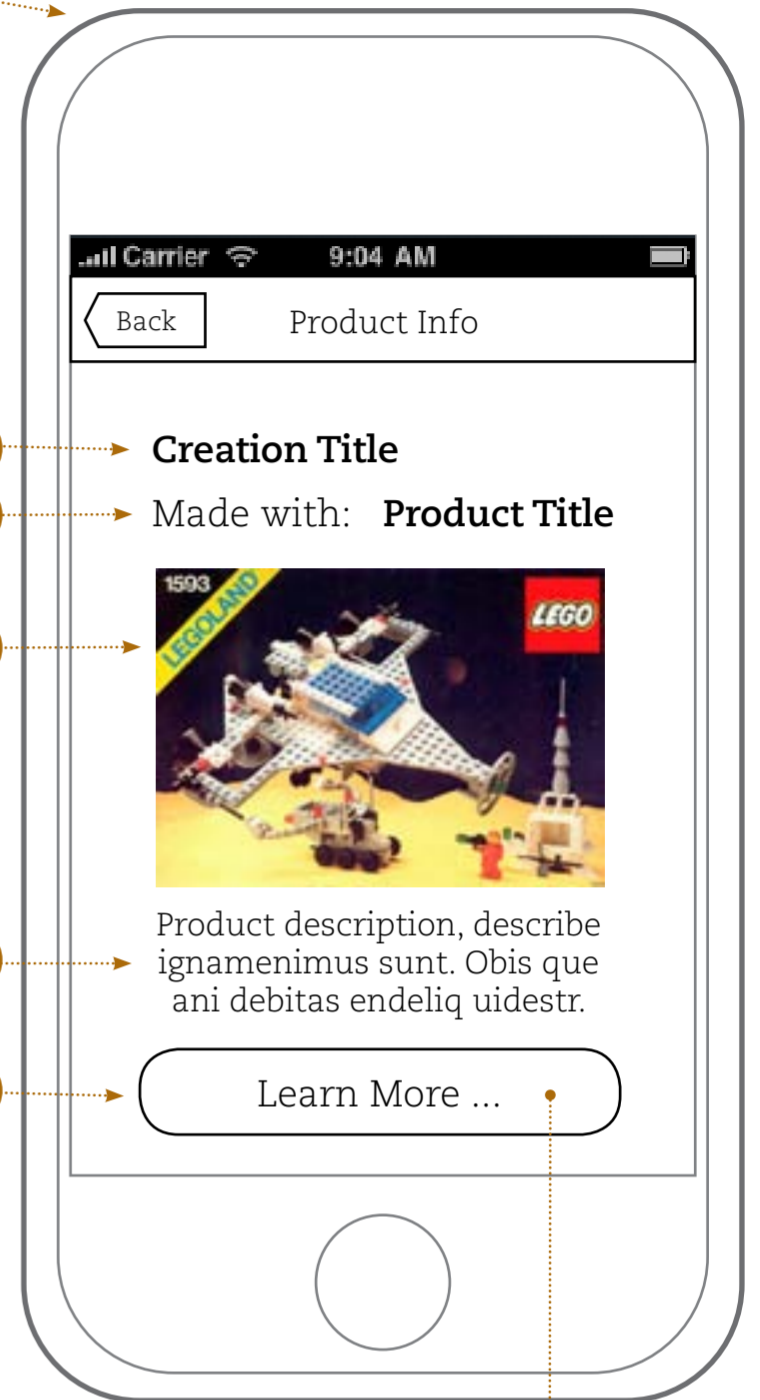


Photo Review



Product Info



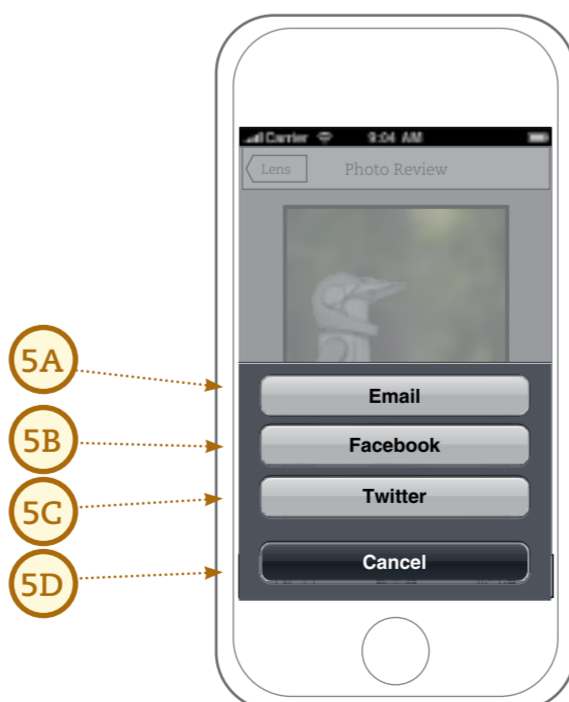
- 1. Tap for Product Info
- 2. Creation (3D Model / Animation)
- 3. Tap to take a Photo
(user lands on Photo Review screen)

- 4. Photo review
- 5. Tap for Photo Sharing Options
 - 5A) - Email
 - 5B) - Facebook
 - 5C) - Twitter
 - 5D) - (cancel)
- 6. Tap for Lens View (to retake photo)
- 7. Tap for the iPhone Camera Roll

- 8. Creation Title
- 9. Product Title
- 10. Product Image
- 11. Product Description
- 12. Tap for E-Commerce Link
(handled by default web browsing app)

(photo sharing options - sharekit)

(external webpage)



APPENDIX: LENS VIEW RANGES; LENS VIEW (FAR RANGE)

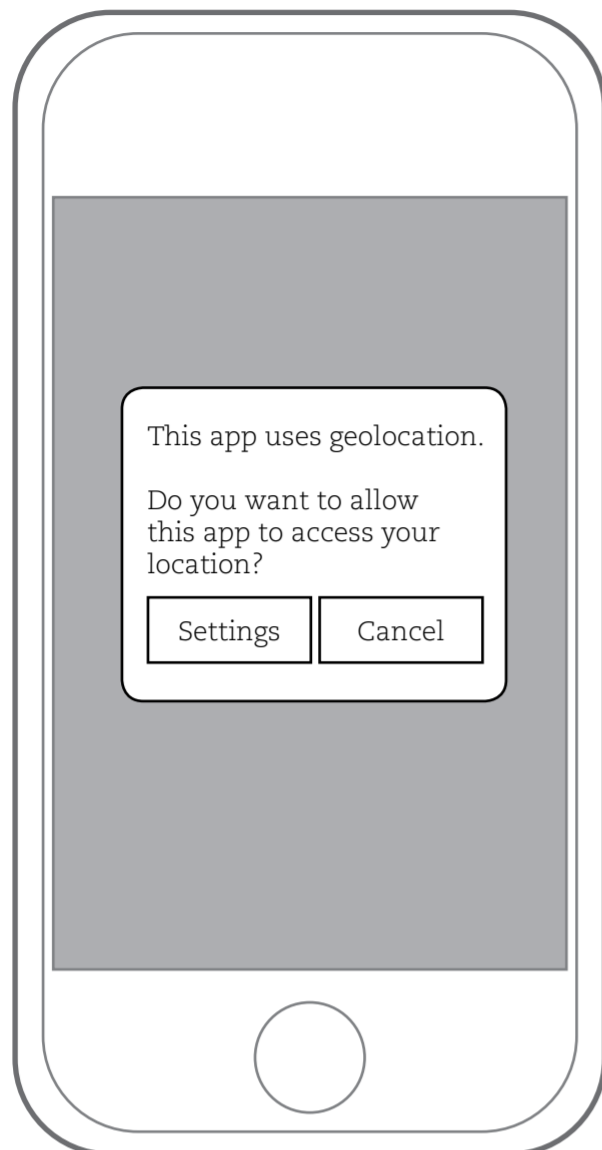
Lens View Ranges

The Lens View appears to the user in 1 of 3 modes, determined by the user's distance from the nearest Creation:

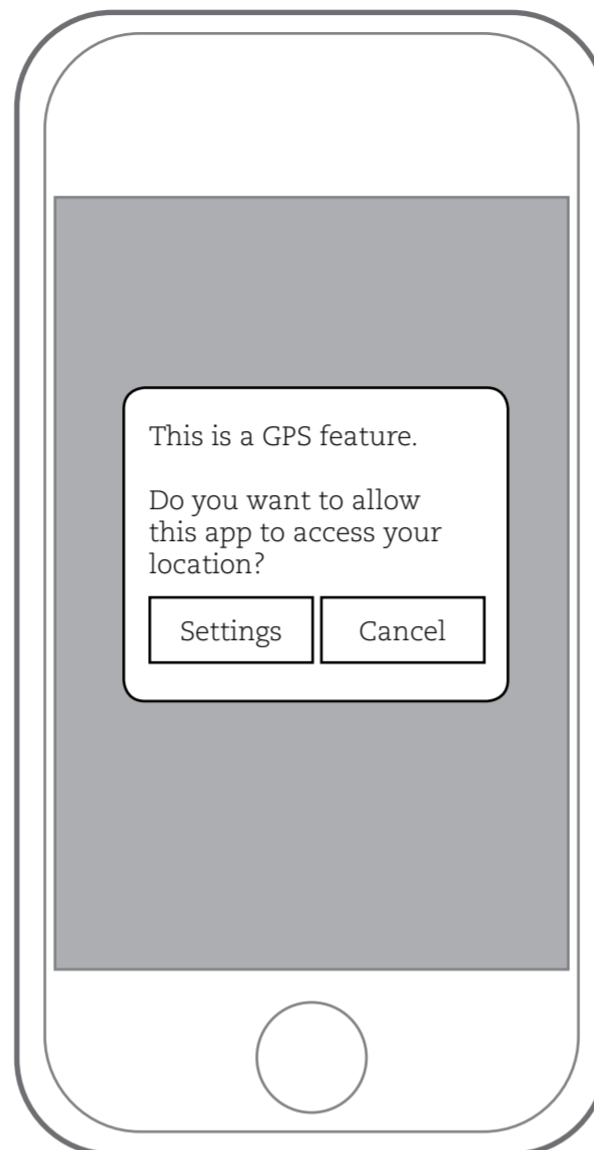


APPENDIX: ERROR HANDLING

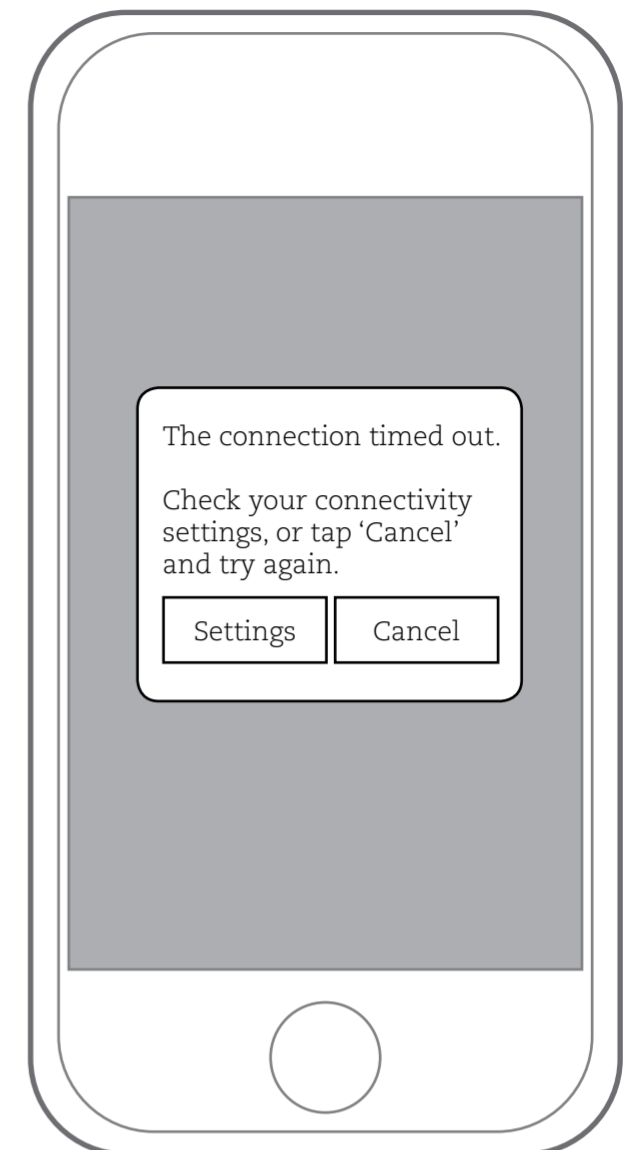
Home View (gps is not enabled)



Various (gps is not enabled)



Various (connection timed out)



Lens View (no creations nearby)

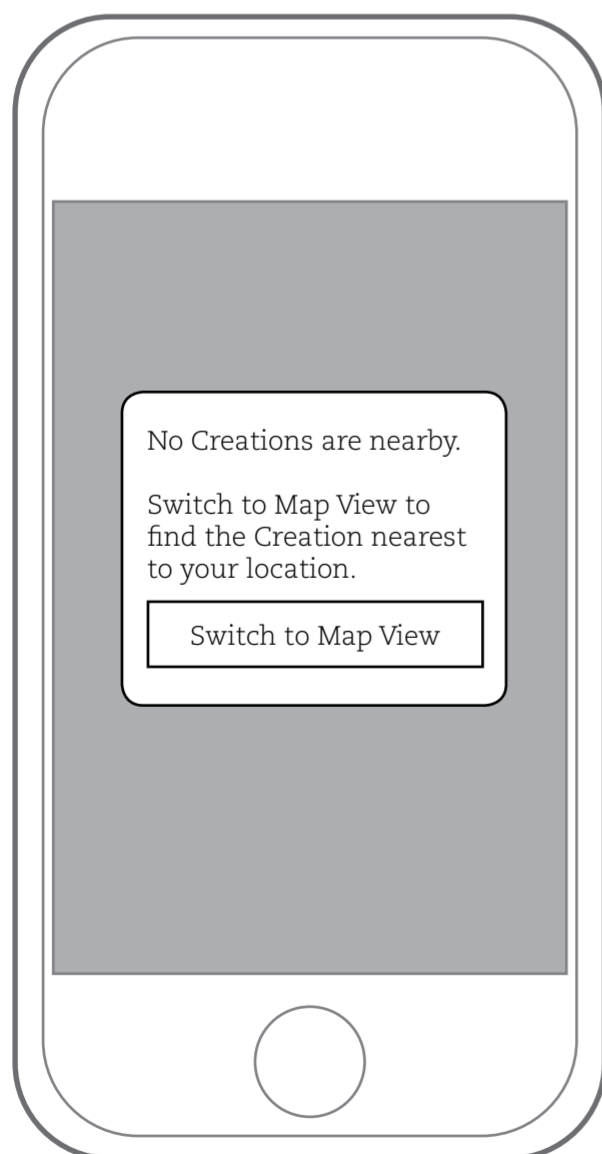


Photo Review --> Share --> Email

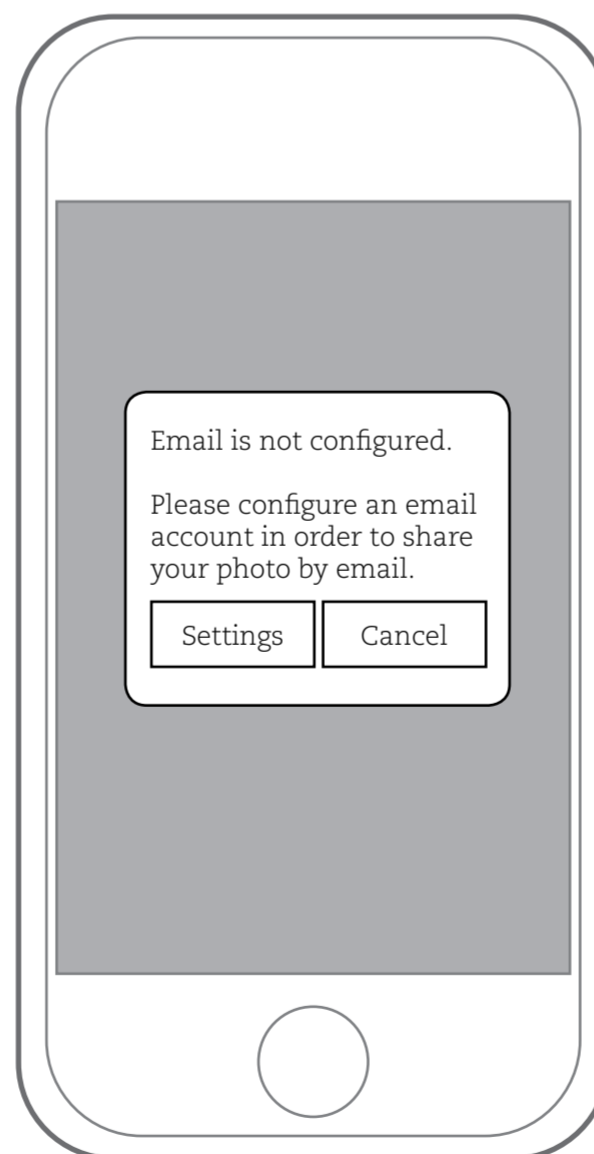
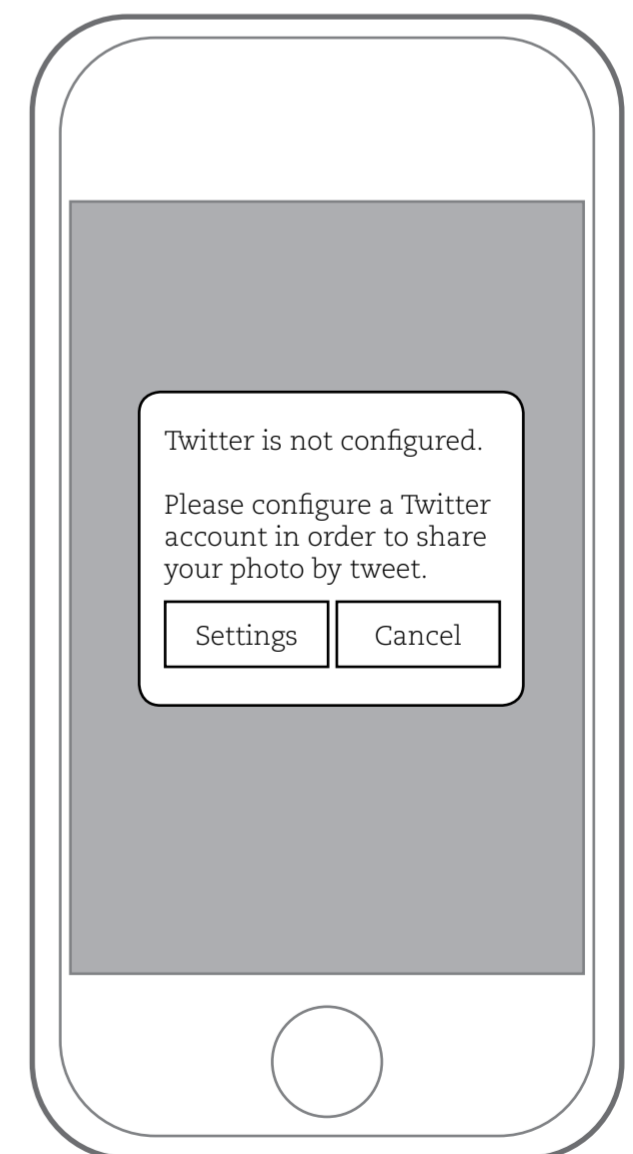
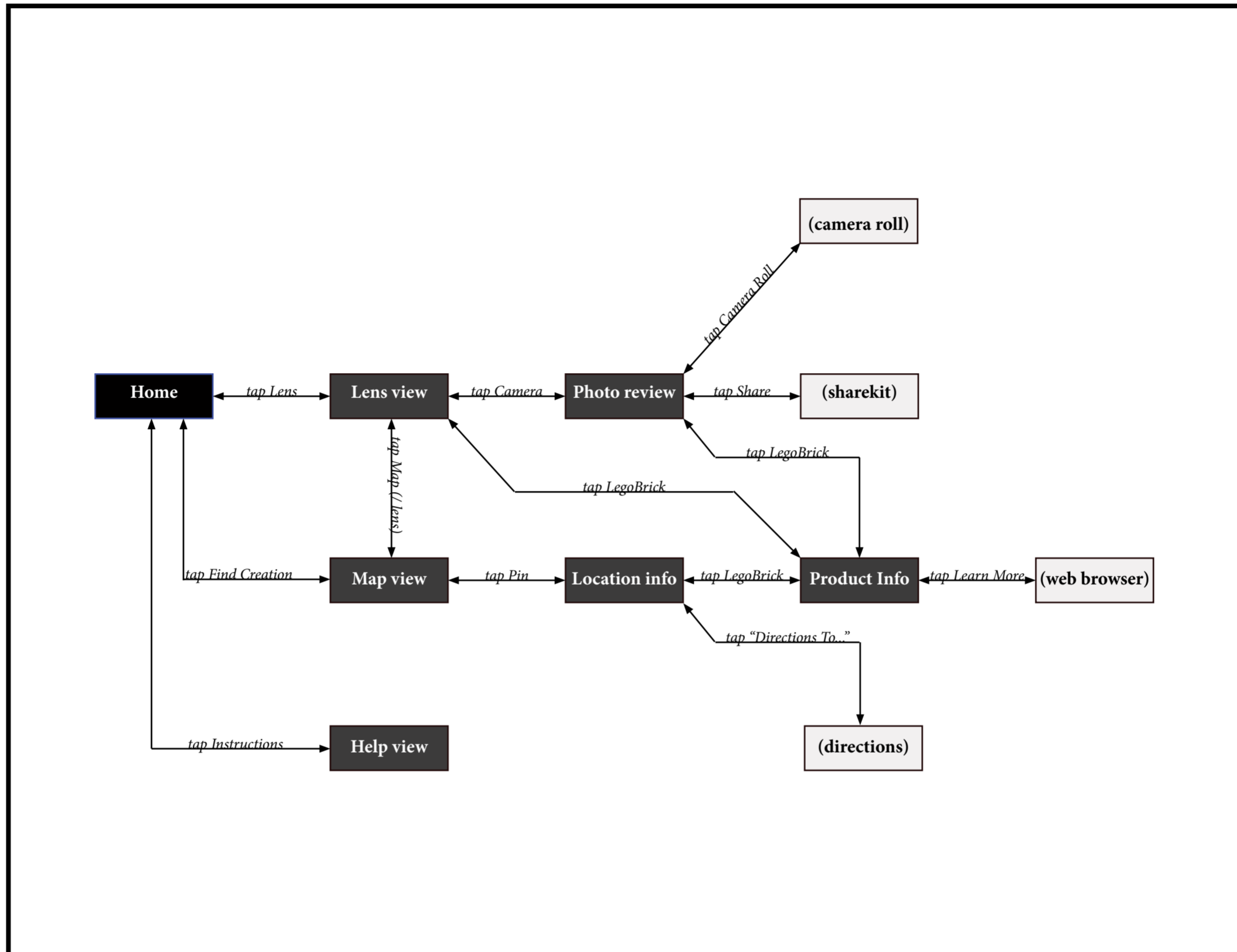


Photo Review --> Share --> Twitter



APPENDIX: APPLICATION FLOW

Application Flow



Legend

